

Landstrøm for skip



APPLY Rig & Modules - Locations and Facilities

APPLY R&M facilities in Stavanger:
Moseidveien 17, Forus, 4033 Stavanger



- > 150 Offices, meeting-rooms (and 10 conference)
- > 1.600 m² high-end production and assembly areas
- > 1.200 m² storage
- > 10.000 m² outdoor area



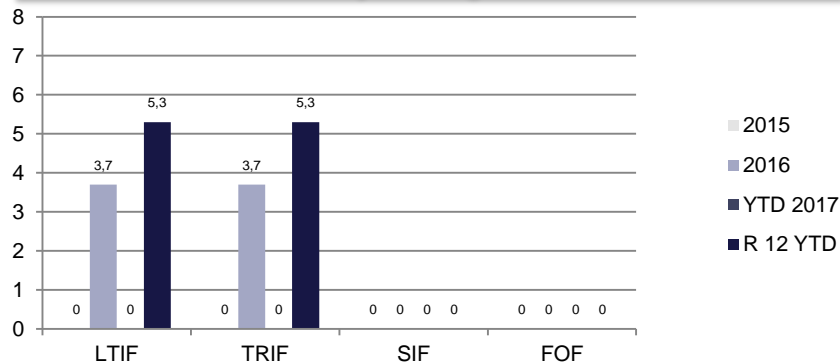
APPLY R&M Bergen:
Espehaugen 45,
5258 Blomsterdalen



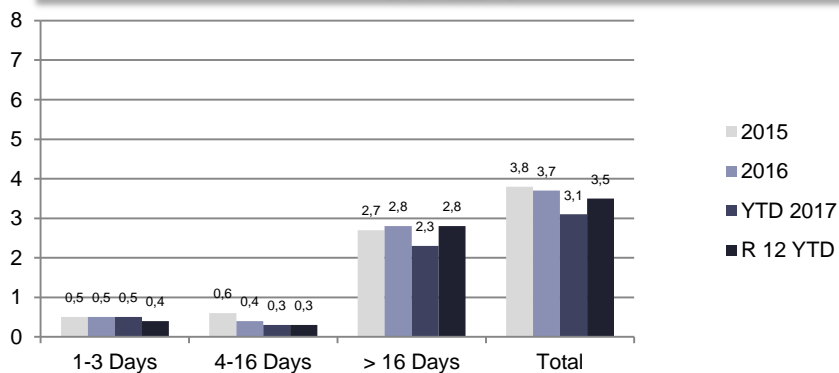
- Leading supplier of services and technology products for the shipping, and oil & gas industry
- 1500 employees (750 engineers)

Licence to operate

Key HSE Figures



Sick Leave



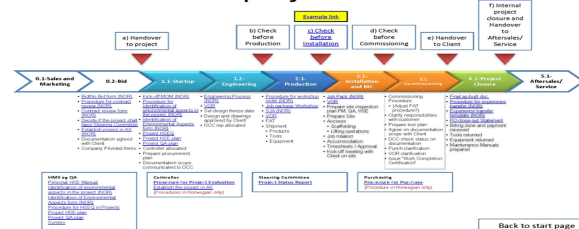
Note: FOF reporting started 2011. LTIF = Lost time injury frequency, TRIF= Total recordable injury frequency, SIF= Serious injury frequency, FOF= Falling object frequency , R12 YTD 2015 = Last twelve months per 1H2015

We meet the highest quality standards

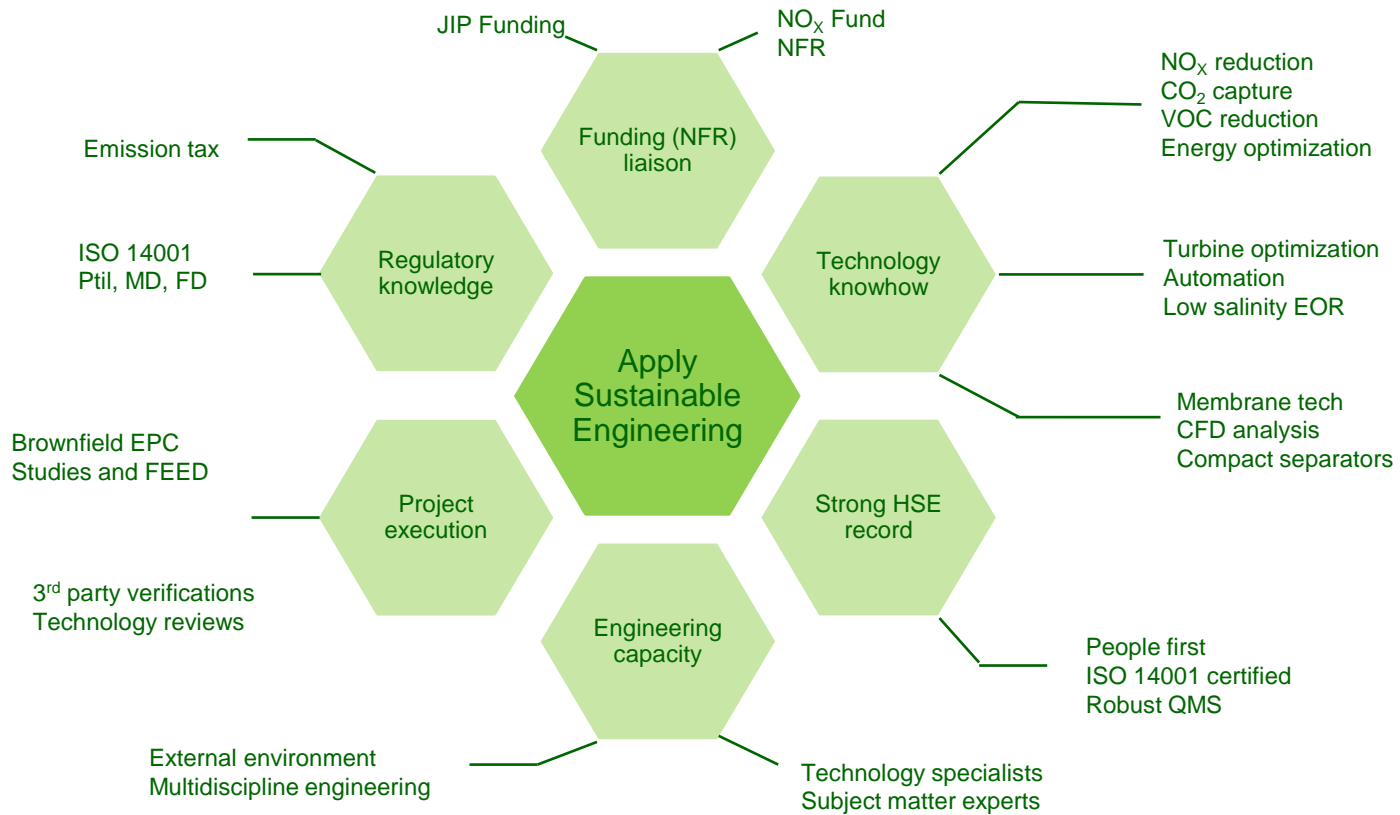
- ISO 9001:2015 and ISO 14001:2015 certified by DNV (last audited February 2017)
- All required authorizations, approvals and certificates required for our operations
- Allocated DCC, Pro-Arc
- Nemko DNV Presafe / EX – Certificates
- Our Project Execution Method



Project Process for large/complex projects



Skills and Competence



Reference: Bergen Havn – Landstrømanlegg Hurtigruten

Needs:

- Bergen og Omegn Havnevesen skal etablere et landsstrøms anlegg for tilkobling til hurtigruteskipene på Dokken. Anlegget skal også kunne brukes av andre skip med dette spennings nivået
- Anlegget skal leveres i henhold landsstrøms normen for lavspent standard IEC/PAS 80005-3
- Hele installasjonen skal leveres i henhold til FEF/ FEL. Anlegget mates fra BKK s 11kV på Dokken
- Anlegget skal ha to avganger på henholdsvis 660V 50Hz og 690V 50Hz. Strømbehov på 1400 A på hver avgang
- Avtalen omfatter utføring av entreprisarbeid med tilhørende serviceavtale på 5 år med opsjoner

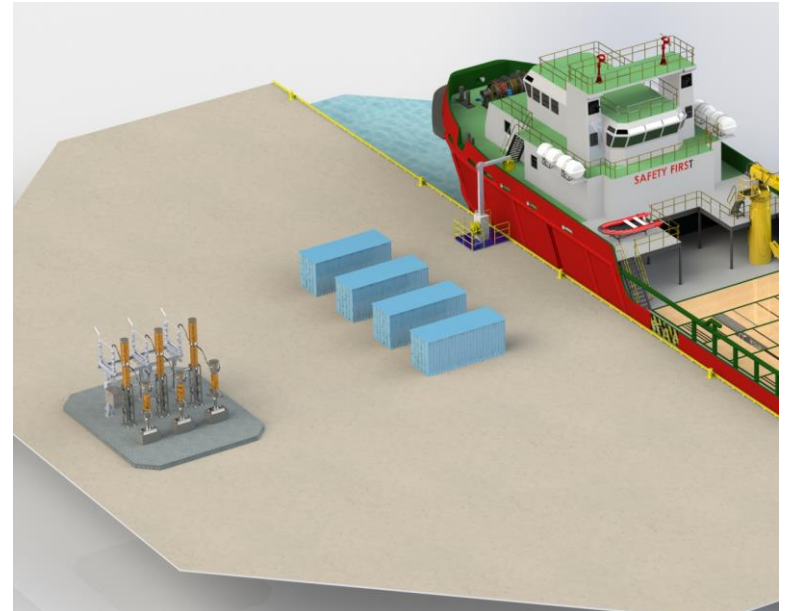


Complete solution for electrical shore connection



APPLY[®] RIG & MODULES

- Pre study and evaluation
- Project planning
- Project management
- Complete solution delivery
- Instalation and start up
- Service and Maintainance
- 24/7 Support



Project finance

We can assist our clients with project funding. The project deliveries from Apply includes all necessary documentation for public funding, and we also offer project finance.





References



| | |
|--|--|
| Drilling Control Systems | <ul style="list-style-type: none"> ▪ Transocean - Transocean Winner ▪ Maersk Drilling - Mærsk Guardian ▪ Maersk Drilling - Mærsk Giant ▪ Maersk Drilling - Mærsk Gallant |
| Bulk & Mud Mix Systems | <ul style="list-style-type: none"> ▪ Saipem - Scarebeo 8 ▪ Baker Hughes - Chirag ▪ Songa Offshore - Songa Trym |
| Solid Control & Cuttings Handling | <ul style="list-style-type: none"> ▪ Statoil / Halliburton - Oseberg B ▪ Songa Drilling - Songa Trym, ▪ Statoil / KCA Deutag - Brage |
| Cementing Units | <ul style="list-style-type: none"> ▪ Schlumberger - TO Leader ▪ Halliburton - Oseberg B ▪ Halliburton - Atwood Advantage drill ship |
| Choke & Kill | <ul style="list-style-type: none"> ▪ Maersk Drilling AS - Maersk Guardian ▪ Songa Offshore AS - Songa Trym ▪ Schlumberger – Tranceocean Leader |
| Swarf Unit | <ul style="list-style-type: none"> ▪ Maersk Drilling AS – XLE4 Jack Up ▪ MI Swaco AS – Rental Unit |
| General Safety & Automation Systems ESD, PSD & F&G | <ul style="list-style-type: none"> ▪ North Atlantic Drilling - West Alpha ▪ Risavika Gassenter - Risavika Gas Centre ▪ Transocean - TO Arctic ▪ Teekay - Apollo Spirit |
| EIT Installations & Modifications | <ul style="list-style-type: none"> ▪ Apply Leirvik – Troll A LQ Extension ▪ Saipem / GIS – Installation of PA system ▪ Statoil – Snorre A LQ Ext. F&G Upgrade ▪ North Atlantic Drilling – West Alpha |
| HVAC & Refrigeration | <ul style="list-style-type: none"> ▪ BP Norge - Norwegian Shelf ▪ Odfjell Drilling Tech. - Deepsea Bergen ▪ Talisman - Gyda ▪ BW Offshore - BW Athena |

| | |
|---|---|
| <ul style="list-style-type: none"> ▪ Rowan Drilling – Stavanger Upgrade for SUT ▪ Teekay – HiLoad Yard Stay upgrade for Brazil ▪ Dolphin Drilling – Bredford Upgrade for SUT | Multidisipline Rig Modifications & Yard Stay |
| <ul style="list-style-type: none"> ▪ Transocean - TO Leader – 250 ton (EPCIC) ▪ North Atlantic Drilling - West Epsilon – 100 ton ▪ Rowan Drilling Norway – TLQ 320 ton ▪ Odfjell Drilling Tech. - Deepsea Bergen – 65 ton | Modules & LQ Extensions & Upgrade |
| <ul style="list-style-type: none"> ▪ Schlumberger ▪ ConocoPhillips ▪ Halliburton ▪ Hytech <p>A production of more than 150 systems is delivered to clients all over the world each year.</p> | Control Panels & Power Distribution Ex & NON Ex |
| <ul style="list-style-type: none"> ▪ Oceaneering – Control and technical rooms ▪ FMC – Various containers workshop, offices etc. ▪ Beerenberg – Frame agreement containers ▪ Statoil – Tailor made power containers | Container Solutions & Equipment |
| <ul style="list-style-type: none"> ▪ Tranceocean – Polar Pioneer – HT/Steam heater ▪ Marathon - Alvheim – Hetatrace ▪ Tractebel – Melkøya – Heate trace process equip. | Heat Trace & Winterization |
| <ul style="list-style-type: none"> ▪ Dolphin Drilling – Borgland & Bideford ▪ Transocean Offshore – TO Arctic ▪ Oceaneering – ROV Systems ▪ Expro – Containers and Units | Ex Survey, Inspection & Re-Certification |
| <ul style="list-style-type: none"> ▪ Songa Offshore – Modification study ▪ North Atlantic Drilling – Design LQ modules ▪ Maersk Drilling – Modification design (DCS) | Engineering & Project Management |
| <ul style="list-style-type: none"> ▪ BP Azerbadsjan – Commissioning and startup ▪ Saipem / GIS – Installation PA system (NL) ▪ Teekay – World wide inst. and commissioning ▪ Halliburton – Inst. and commissioning (Remote) | Global Installation & Commissioning |
| <p>We have served our clients with global Sales & Services for more than 20 years, annually performing some 40.000 hrs of service and support.</p> | After Sales & Services, 24/7 Support |

Products & Services - Newbuilds – Maintenance - Retrofits

We put you in control
of your operations ...

... serving all systems

Drilling Control Systems



Bulk & Mud Mix Systems



Solid Control & Cuttings Handling



Cementing Units



Choke & Kill



Swarf Unit



General Safety & Automation Systems
ESD, PSD & F&G



EIT Installations & Modifications



HVAC & Refrigeration



Multidisciplinary Rig Modifications & Yard Stays



Modules & LQ Extensions & Upgrades



Control Panels & Power Distribution
Ex & NON Ex



Container Solutions & Equipment



Heat Trace & Winterization



Ex Survey, Inspection & Re-Certification



Engineering & Project Management



Global Installation & Commissioning



After Sales & Services, 24/7 Support